



The APart MASK4 loudspeakers have been designed for the contractor market and supply you with a crystal clear sound, from back ground music up to "dance level" music.

MASK series have a unique and very stylish innovative design that makes them fit into any interior and design. The cabinet is made of high quality enforced PP4 ABS. The internal bracketing and the shape of the cabinet avoid internal interference and optimize the sound quality of the MASK4 loudspeaker.

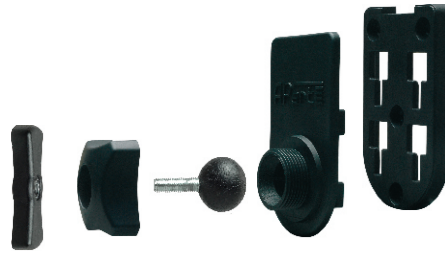
MASK4 has a powerful 4" coated paper cone woofer. Together with the Vari-throat horn for the Ferro-fluid cooled silk dome tweeter this results in a high SPL and ultra low distortion. Its fase alignment and wide frequency range makes sure every note, starting from the robust low-mid over the clean middle range to the crystal clear highs, reaches your ears with an astonishing clarity.

The build-in Auto-Reset 3-step Protection Guard together with the quality components make MASK4T a fail-safe loudspeaker, even at high power loads!

Thanks to the Intelli-Mount bracket, the MASK4 is easy and fast to install. The Vari-throat horn for the tweeter and the 5° down tilt angle in which the woofer and tweeter are mounted in the cabinet, guarantee a perfect sound dispersion, without the need of a big tilt angle of the cabinet itself. The MASK4 cabinet has a M8 thread mounting point tapped at the back of the cabinet. This way many other mounting systems can be used.

MASK4 loudspeakers are suitable for both indoor and outdoor use. The grill is made of aluminium and the woofer has been coated. The cabinet is supplied with a rubber IP protection cover for the loudspeaker terminals. This way water ingress and corrosion of the terminals is avoided.

MASK4 is available in black (Ref; MASK4-BL), white (Ref; MASK4-W) or silver (Ref; MASK4-SLV) From 12 pieces on, MASK series can be painted in any other RAL colour.



TECHNICAL SPECIFICATIONS

Type :	2-way HiFi Pro, sealed box
Cabinet :	Enforced PP4 ABS
Woofer :	4.2" HD Type
Tweeter :	1" HD silk dome on Varithroat horn
Impedance :	8 Ohm
AES Rated :	50 watt
Music - Program :	70 watt
Dynamic Peak (low-cut) :	200 watt
Protection :	Auto-Reset 3-step Protection Guard
SPL 1 Watt/1M :	89 dB
SPL Max Peak :	116 dB
Freq. range :	80 Hz - 20 kHz
Speaker connections :	Push terminals
Dispersion :	5° downtilt angle / 120° H x 80° V
IP rating :	64
Thread size mounting point :	M8
Dimensions (HxWxD) :	223 x 129 x 130 mm
Weight :	2.05 Kg