

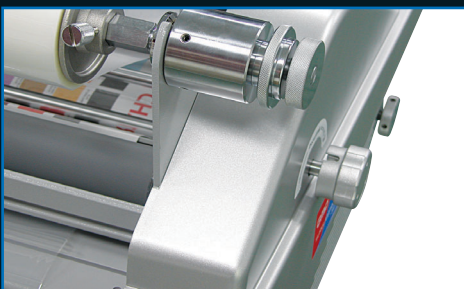


SURELAMPRO 380D/500D

High speed Roll Laminator (Single side & Double side)



Single side laminator and encapsulator.
Laminating speed 7m/min.
Manual feeding and cutting. Decurling bar.



SURELAMPRO 380D/500D

- ◆ Maximum laminating speed of 7m/min
- ◆ Consumption of film
 - PET base Heat Seal Laminating Films from 25 mic up to 250 mic
 - PHOTONEX Film(PVC Base Embossed) 100 mic up to 500 mic
 - POLYNEX Film(Thermal OPP) 25 mic up to 40 mic
- ◆ Special Features
 - Decurling device for single side lamination
 - Heat shoe & Hot roller combination
 - Top and bottom film alignment system(Patented)
 - Various Embossing Textured Effect with interchangeable rollers(Optional)
 - Linen texture, Fine texture, Leather, Sparkler



SURELAMPRO 380D/500D

Roll Laminator

Heat shoe roll fed laminator designed for the busy office, copy shop of commercial laminating operation. With variable speed control up to 10 meters per minute, and variable temperature control, the Surelam Pro series can handle all industry standard films up to 500 micron with combination of heat shoes & hot roller system.



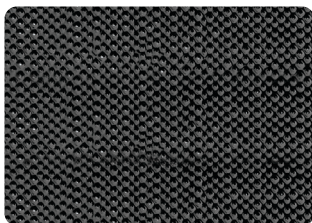
Features include 8-bit microprocessor control with pre-set functions and LCD readout, pressure control, unique film tracking system for easy film alignment, cross cutter and turbo power cooling system, side lays on feed table, opening heat shoes for easy roller cleaning, purpose-built stand and larger roll film capacity.

Features :

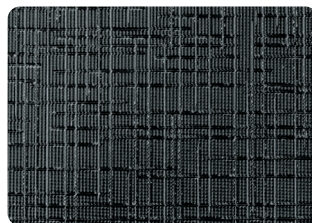
- Increased film capacity
- Turbo cooling system
- Safety shield
- LCD display helps to eliminate operator error
- Purpose-built stand
- Feed Guide on Feed table
- Pre-set functions 8-bit microprocessor controlled

Types of Embossing Patterns

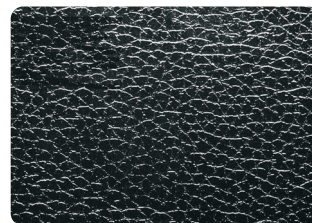
- Various types of embossing offer high quality and capacity on demand



• Linen Texture



• Fine Texture



• Leather



• Sparkler

Specifications

Model Name	SURELAMPRO-380D	SURELAMPRO-500D
Laminating Speed	7m/min	7m/min
Laminating Width	380mm	500mm
Laminating Films	25mic~500mic	25mic~500mic
Thickness of substrate(Paper)	80g/ nif ~ 350g/ nif	80g/ nif ~ 350g/ nif
Power Requirements	220~240V, 50/60Hz	220~240V, 50/60Hz
Power Consumption	3000W, 12.6A	3000W, 12.6A
Warm Up Time	7 minutes	7 minutes
Heating System	Heat Roller & Shoe Infrared Heater	Heat Roller & Shoe Infrared Heater
Operating Temperature	150°C Max.	150°C Max.
Speed Control	Key Pad	Key Pad
Temperature Control	Key Pad	Key Pad
Pressure Adjustment	Manual (5step)	Manual (5step)
Film Core	19-58WH	19-58WH
Cooling System	Blower	Blower
Dimensions(WxLxH)	610 x 615 x 460mm	760 x 615 x 460mm
Type of Main Motor	DC W-Geard Motor /36V80	DC W-Geard Motor /36V80

Copyright GMP 2004. All rights reserved. Reproduction by any means of any image in this catalogue is prohibited without the prior written consent of GMP and its authorized agent

- *Chromonex® : PP and PET composited Film
- *Photonex® : Heat Seal Laminating utilizing PVC material Film
- *Polynex® : Heat Seal Laminating utilizing OPP material Film
- *Micronex® : Heat Seal Laminating utilizing ultra thin dry overcoating Film

G R O U P E
CK
CHARLES KIEFFER

CK Business Center
 2, rue Léon Laval
 Z.A. Am Bann
 L-3372 Leudelage
 Tél : +352 26 380-1 Fax : 26 380-380

www.ck-online.lu www.konicaminolta.lu
 postprint@ck-online.lu