



PRIMACY



THE FAST AND VERSATILE CARD PRINTER

The Primacy printer is extremely fast, powerful and efficient. Using advanced encoding technologies, this desktop printer is the best solution for issuing personalized cards, from the most simple to the most secure. Primacy is available in single and dual-sided versions and is the ideal choice for printing and encoding cards in medium and large runs.

ENHANCED PRODUCTIVITY

- Primacy personalizes color cards in record time: up to 225 cards per hour for single-sided printing and 140 cards per hour for dual-sided.
- The printer offers a large autonomy thanks to its high capacity card feeder and output hopper.

PROFESSIONAL PRINTING

- Primacy features 300 dpi photographic resolution and edge to edge printing for optimum print quality.
- Thanks to an enhanced graphical processing, you get a faithful depiction of the images in high definition and more precise monochrome texts.

SCALABILITY ON SITE

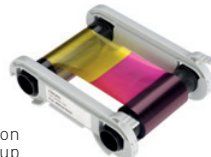
- As Primacy evolves according to your needs, you can activate the dual sided printing option on the spot.
- Your printer can also be upgraded with a card lamination module and encoders for magnetic stripe, contact or contactless chip.

Card feeder and output hopper at the front



Output hopper / reject tray for defective cards at the back

Easy handling, automatic ribbon recognition and setup



MODEL WITH A COLOR TOUCH SCREEN TO INTERACT WITH THE PRINTER

MAIN FEATURES

GENERAL FEATURES

- Direct-to-card dye-sublimation/Resin thermal transfer
- Single-sided printing, edge-to-edge, upgrade kit for dual-sided printing as an option
- Standard 300 x 300 dpi resolution
- Customizable 300 x 600 dpi resolution (color and monochrome printing) or 300 x 1200 dpi resolution (monochrome printing only)
- 32 MB memory (RAM) standard - optional 64 MB¹
- Dual-sided Card Lamination Module (CLM) as an option¹
- Colors available: fire red & brilliant blue

PRINTING PERFORMANCES¹

- Single side:
 - Color (YMCKO): 190 - 225 cards/hour
 - Monochrome: 800 - 1000 cards/hour
- Dual side:
 - Color (YMCKO-K): 140 cards/hour

CARD MANAGEMENT AND SPECIFICATIONS

- Feeder capacity: 100 cards (0.76 mm - 30 mil)
- Output hopper capacity: 100 cards (0.76 mm - 30 mil)
- Open output hopper as an option for collecting cards one by one
- Reject tray/output hopper capacity at the back: 50 cards (0.76 mm - 30 mil)
- Card thickness: 0.25 to 1.25 mm (10 to 50 mil), gauge adjustment (0.25 mm - 10 mil only for monochrome printing)
- Card types: PVC cards, composite PVC cards, PET cards, ABS cards¹, special varnished cards¹
- Card format: ISO CR80 - ISO 7810 (53.98 mm x 85.60 mm)

INTERFACES

- USB (1.0, 1.1, 2.0, 3.0), cable supplied
- Ethernet TCP-IP 10BaseT, 100BaseT (Traffic Led)
- 802.11b/g wireless connection on the Wireless range

ADDITIONAL ENCODING MODULES

- Available modules:
 - Magnetic stripe encoder ISO 7811 HiCo/LoCo, JIS2
 - Smart contact station ISO 7816-2
 - Contact smart card encoder - PC/SC, EMV 2000-1
 - Contactless smart card encoder - ISO 14443A, B, ISO15693, MIFARE, DESFire, HID iCLASS, UHF [standard compliance: EPC C1 Gen2 / ISO18000-6C ETSI EN 302 208 or FCC part 15.247]
 - Other specific encoders upon request
- Internal USB ports
- USB encoding over IP through additional USB Net Server module, upon request
- Options can be combined
- Factory-installed or installed on site

SAFETY

- Support for Kensington[®] security lock
- Data encryption for magnetic encoding¹
- Locking system as an option¹

DISPLAY

- Printer LEDs
- Color touch screen display as an option
- Graphical notifications from the printer²: cleaning alerts, empty/low level ribbon and card alerts, etc

EVOLIS HIGH TRUST[®] RIBBONS

To maximize the quality and durability of printed cards, the lifespan of the print head and the overall printer reliability, use Evolis High Trust[®] ribbons.

- Automatic identification and setting
- Delivered in a drop-in cassette for easy handling
- Ribbon saver for monochrome printing

List of ribbons available on www.evolis.com

SOFTWARE

- Delivered with Evolis Premium Suite[®] for Windows[®]:
 - Printer driver
 - Evolis Print Center for administration and settings
 - Evolis Printer Manager for graphical notification³
 - 24/7 online support
 - Compatible with Windows[®] (32/64 bits): XP SP3, Vista, W7, W8, W10
- Delivered with cardPresso XXS for designing and editing badges:
 - Internal database (unlimited records)
 - Windows[®] (from XP onwards) and Mac OS X
- Delivered with a driver for Mac OS X (from 10.6 onwards)
- Linux OS upon request
- Evolis Premium SDK for remote supervision of the printer, while facilitating and speeding up integration into IT systems

ECO-FRIENDLY DESIGN, CERTIFICATIONS AND STATEMENT OF COMPLIANCE

- Standby, sleep modes & reduced energy consumption
- CE, FCC, ICES, VCCI, CCC, KC, BIS, EAC
- RoHS

SIZE AND WEIGHT

- Size (H x W x D):
 - 247 x 205 x 381 mm (9.72" x 8.07" x 14.99")
 - With reject tray/output hopper at the back: 247 x 205 x 487 mm (9.72" x 8.07" x 19.17")
- Weight: 4.02 kg (8.86 lbs)
- With reject tray/output hopper at the back: 4.11 kg (9.06 lbs)

WARRANTY

- 3-year warranty (printer and print head)⁴
- Warranty extension available as an option

¹ Under specific conditions / ² Depends on the Windows[®] version / ³ Requires the .net 4.0 client profile version
⁴ Warranty subject to observance of specific conditions and use of Evolis High Trust[®] ribbons

